

# **Acat World Championship 2016**

## **18-24 June**

### **IJsselmeer off Medemblik (the Netherlands)**

**Organized by the Royal Yachtclub 'Hollandia' (RYH), in conjunction with the Dutch A-Division Catamaran Class Association (DACA) and in association with the International A-Division Catamaran Association (IACA)**

## **FINAL NOTICE OF RACE**

### **1 RULES**

- 1.1 The regatta will be governed by the rules as defined in *The Racing Rules of Sailing* (RRS).
- 1.2 The IACA Championship Rules will apply.
- 1.3 Appendix P will apply.
- 1.4 Rule 44.1 will be changed so that the Two-Turns Penalty is replaced by the One-Turn Penalty.
- 1.5 The sailing instructions may consist contain minor changes to the RRS.
- 1.6 If there is a conflict between languages the English text will take precedence.

### **2 ADVERTISING**

Boats may be required to display the advertising chosen and supplied by the organizing authority.

### **3 ELIGIBILITY AND ENTRY**

- 3.1 The regatta is open to all A-Division Catamaran Class certified boats. Competitors shall present upon registration:
  - a) A supporting document to justify their membership to an ISAF Member National Authority;
  - b) If necessary, a valid authorization to display advertising on boat;
  - c) The measurement form or certificate of the boat, mast and sail;

- d) A valid third party liability insurance with a minimum coverage of € 1.500.000 per incident, or the equivalent.
- 3.2 There will be no maximum number of entries. In case of more than 100 entries, fleet splitting will apply in accordance with the IACA Championship Rules, Appendix 2.
- 3.3 Registration and payment should perform according to IACA rules (see art. 4-point c) of the IACA Championship Rules). Competitors can register through their National Class Association. As of 15 March 2016 each National A-CAT Association should transfer their entry fees to the Organizing Authority.
- 3.4 A competitor who has his domicile in the Netherlands shall be a member of a Yacht Club or other body affiliated to the Royal Netherlands Watersport Association (RNWA) and shall have a valid racing license or event license, issued by or in the name of the RNWA.

#### **4 ENTRY FEES**

- 4.1 The required entry fee is € 250. An additional fee of € 50 will apply for registration after 15 March 2016 .
- 4.2 The organizing authority may reject entries after 1 June 2016.
- 4.3 The entry fee shall be paid to the national association before 15 March 2016. After 15 March 2016, the Entry Fee shall be paid to:  
Bank name ABNAMRO  
IBAN NL52ABNA0516583115  
Name of account holder : DACA ( Dutch A division Catamarans Association )  
City : Rheden, the Netherlands

#### **5 RACING FORMAT**

- 5.1 A total number of ten (10) races are scheduled.
- 5.2 No more than three races may be sailed per day, but only in compliance with IACA Championship Rules. See also NOR 6.3.
- 5.3 If the number of participants exceeds 100, the regatta may consist of a qualifying series and a final series.

#### **6 SCHEDULE**

- 6.1 Races and events are scheduled as follows:

<b>Date</b>	<b>Time</b>	<b>Event</b>
17 June (Friday)	14:00 – 17:00	Registration
18 June (Saturday)	10:00-16:00 hrs	Registration
19 June (Sunday)	10:00-12:00 hrs	Registration
	14:00 hrs	Practice Race
	18:00 hrs	Opening Ceremony with Welcome drink
20 June (Monday)	11:00 hrs a.s.a.p.	Warning signal race 1 Warning signal race 2
21 June (Tuesday)	11:00 hrs a.s.a.p.	Warning signal race 3 Warning signal race 4
22 June (Wednesday)	11:00 hrs a.s.a.p. 18:00 hrs	Warning signal race 5 Warning signal race 6 Championship dinner
23 June (Thursday)	11:00 hrs a.s.a.p.	Warning signal race 7 Warning signal race 8
24 June (Friday)	11:00 hrs a.s.a.p.	Warning signal race 9 Warning signal race 10
	a.s.a.p.	Price Giving & Closing Ceremony with Goodbye drink

- 6.2 On the last day of the regatta there will be no warning signal after 1500 hrs.
- 6.3 One extra race per day may be sailed, provided that no race becomes ahead of schedule and no more than three races per day will be sailed.

## **8 MEASUREMENTS**

- 8.1 Each boat shall produce a valid measurement certificate at registration.
- 8.2 Measurement and equipment inspection will be conducted in accordance with A Class Catamaran Measurement Guidelines.
- 8.3 The Equipment Inspection Regulations for the Championship will be published on the event website no later than 1 June 2016.

## **9 SAILING INSTRUCTIONS**

The Sailing Instructions will be available from Saturday 11 June 2016 and will be posted on the event website. Hard copies will be available at the race office upon registration.

## **10 VENUE**

- 10.1 Attachment A shows the location of the regatta harbor and the race office.
- 10.2 Attachment B shows the location of the racing areas.

## **11 THE COURSES**

The courses to be sailed will be upwind-downwind courses, in accordance with IACA Championship Rules, Appendix 4.

## **12 PENALTY SYSTEM**

- 12.1 Rule 44.1 is changed so that the Two-Turns Penalty is replaced by the One-Turn Penalty.
- 12.2 Decisions of the international jury will be final as provided in rule 70.5.

## **13 SCORING**

- 11.1 Five (5) races must be completed to constitute a series.
- 11.2 (a) When fewer than six (6) races have been completed, a boat's series score will be the total of her race scores.
- (b) When from six (6) to eight (8) races have been completed, a boat's series score will be the total of her race scores excluding the worst score.
- (c) When nine (9) or more races have been completed, a boat's series score will be the total of her race scores excluding her two worst scores.

## **14 SUPPORT BOATS**

- 14.1 All support boats shall be registered with the Organizing Authority and will be required to comply with local legislation and event support boat regulations. The Organizing Authority may refuse registrations and accept later registrations at their sole discretion.
- 14.2 The registrant of a support boat will be charged for a not refundable fee of € 50. The fee includes cranage (first and last day), use of the slipway, trailer parking en berthing in the harbor.

- 14.3 All support boats shall clearly display the three letter national code of their ISAF Member National Authority at all times while afloat. The minimum height for the letters shall be 200 mm and visible from both sides of the boat.
- 14.4 Support boats with team leaders, coaches and other support personnel shall stay outside areas where boats are racing from the time of the starting sequence until all boats have finished or the race committee signals a postponement, general recall or abandonment. Support boats shall comply with any reasonable request from a regatta official.

## **15 RADIO COMMUNICATION**

No equipment capable of radio transmissions or radio communications may be carried by any competitor while on the water. This restriction also applies to mobile telephones.

## **16 PRIZES**

- 16.1 Trophies or prizes will be awarded to the Top 10 classified of the event.
- 16.2 The winner of the World Championship will obtain the title '2016 A-Cat World Champion'.
- 16.3 The following prizes will also be awarded:
- Junior Champion: The top placed junior (aged less than 25) ;
  - Master Champion: Top placed master (aged 45-50);
  - Grand Master Champion: Top place grand master (aged 51-55);
  - Great Grand Master Champion: Top place great grand master ( 56+);
  - Woman Champion: Top place female sailor.;
  - Classic : Top non-foiling participant.

## **17 DISCLAIMER OF LIABILITY**

- 17.1 Competitors participate in the regatta entirely at their own risk. See rule 4, Decision to Race. The organizing authority and its officers, members and volunteers will not accept any liability for material damage or personal injury or death sustained in conjunction with or prior to, during, or after the regatta.
- 17.2 The establishment of the Notice of Race and the sailing Instruction in no way limits or reduces the complete and unlimited responsibilities of a competitor being solely and entirely responsible for the management of a boat he is sailing.

- 17.3 A competitor shall maintain his boat in a safe and seaworthy condition.
- 17.4 A competitor shall be of good health and a competent sailor capable of racing a A-class in open water in strong winds and it his sole responsibility to decide to participate in a race or to continue racing.
- 17.5 A competitor is recommended to have personal accident and health insurance that covers them while attending the regatta and whilst racing.

## **18 PHOTOGRAPHY CONSENT**

By entering the Championship competitors accept that they may be photographed and/or videotaped participating in the race and/or using the regatta facilities and they consent to the taking of such images and to the use, re-use, publication and republication of such images in any media, in conjunction with the competitor's name or not, without compensation and without the competitor's approval of such images or any use thereof.

## **19 SAFETY AND ENVIRONMENT**

### **19.1 General**

By signing the entry fee, competitors shall comply with the following:

- Put safety of yourself and competitors above race results
- Keep the boat park and sailing area clean of any debris
- Do not leave the boat park without the necessary safety precautions

19.2 A mandatory tally system shall be employed. Before launching each competitor shall remove the appropriate tally band from a board on the beach area and wear this on their left wrist at all times whilst afloat. On returning ashore they shall replace the band on the correct hook on the tally board, within 30 minutes after returning to shore. Failure to take out, or return the band correctly may result in the competitor being reported to the protest committee for appropriate action. The penalty may be less than disqualification if the protest committee so decides.

19.3 A boat that retires from a race shall inform the race committee as soon as possible and before leaving the race area, and shall notify the race office at once on coming ashore.

19.4 Boats not leaving the harbor or beach for a day's race shall inform the race office prior to the start.

19.5 For vessels equipped with J or Z-boards, the helmsman shall wear a safety helmet at all times while racing.

## 20 RACE OFFICE

The race office inside the Regatta Office will be open for registration from 14:00 Friday 17 June.

Address:	Harbor:
Regatta Office ISC Medemblik	Regatta Center Medemblik
Vooroever 1 , 1671 SG Medemblik	
Phone: +31 (0)227-540 077	E-mail: <a href="mailto:iscm@watersportverbond.nl">iscm@watersportverbond.nl</a>

## 21 TRAILER PARKING, DOCKING AND CARS

All participants shall park their boats and road-trailers on the premises of the harbor Regatta Center Medemblik. Cars shall be parked in the designated parking areas. No cars are allowed at the dinghy park. Please follow the beach master's and the harbor master's instructions at all times.

## 22 HOUSING AND CAMPERS/CARAVANS

Regulations in the Netherlands prohibit sleeping in campers and caravans parked along public roads or in public car parks.

On the designated area on the premises of the Regatta Center Medemblik, sleeping in caravans, tents or campers is allowed, provided a tourists tax will be paid to the Harbor Master. The fee is payable at the 'Havenkantoor' upon registration.

## 23 ACCOMODATION

23.1 Competitors shall make their own housing arrangements. Accommodation can be found through the website [www.vvmedemblik.nl](http://www.vvmedemblik.nl) .

23.2 On walking distance from the venue a bungalow park is situated. For information and booking see website [www.bungalowparkzuidzee.nl](http://www.bungalowparkzuidzee.nl)

## 21 FURTHER INFORMATION

For further information on the venue and the racing area, see the event website [www.acatworlds2016.nl](http://www.acatworlds2016.nl)

or email to: [mailto:acatworlds2016@gmail.com](mailto:mailto:acatworlds2016@gmail.com)



**Route to harbor Regatta Center Medemblik**

Medemblik is a medieval town, with some very small roads. In order to restrict the traffic inconvenience for the citizen of Medemblik, please start following the road signs to the recreation site "**Vooroever**" (later on follow: harbor Regatta Center Medemblik) **before** entering the town of Medemblik.



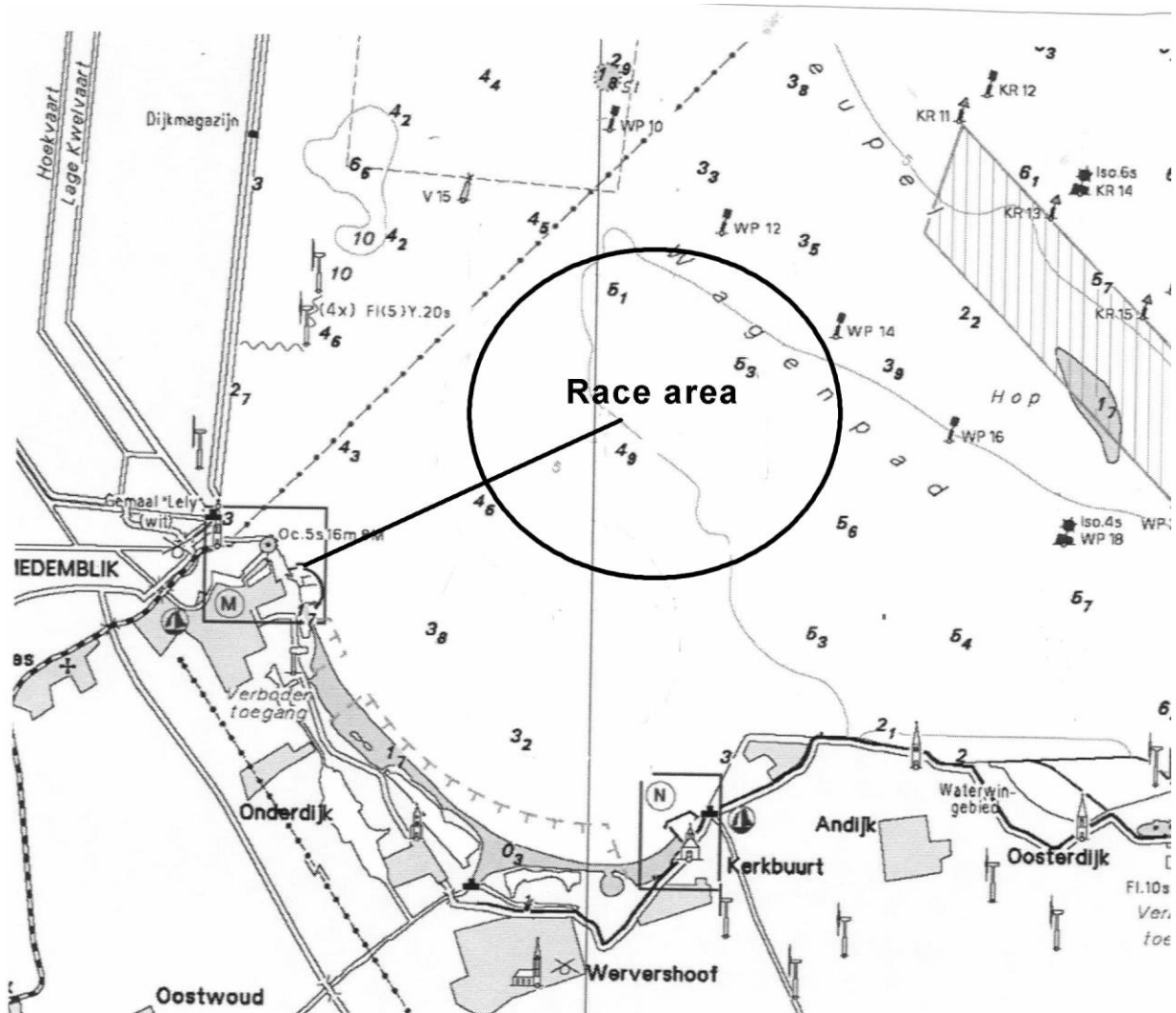
# NOR ATTACHMENT B

## APPROXIMATE POSITION RACE AREA

Harbor (Regatta Center) – Racing Area (midpoint)

Distance: approx. 2, 0 NM

Compass bearing: approx. 060°



BEACH AREA

